

Cameron Mather

Left Wing

Vivo fc | South African | 2013-08-09 | 144 | 33

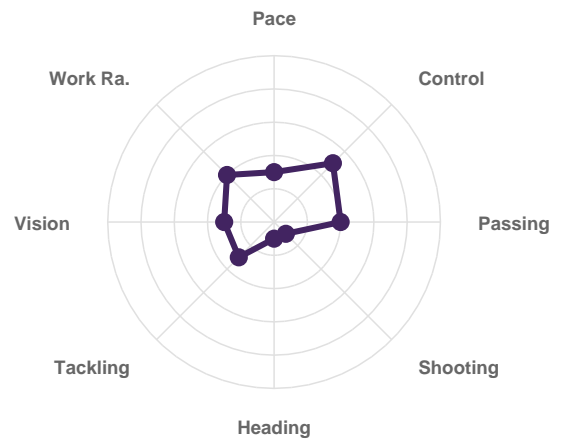
PLAYER OVERVIEW

OVERALL GRADE

5/10

TECHNICAL AVG

3.2/10



TECHNICAL RATINGS

Technical Abilities

Ball Control	<div style="width: 60%;"></div>	5	Passing (Short)	<div style="width: 80%;"></div>	4
Passing (Long)	<div style="width: 80%;"></div>	4	Crossing	<div style="width: 80%;"></div>	4
Shooting	<div style="width: 20%;"></div>	1	Heading	<div style="width: 20%;"></div>	1
Tackling/Defending	<div style="width: 60%;"></div>	3	Right Foot	<div style="width: 80%;"></div>	5
Left Foot	<div style="width: 60%;"></div>	3			

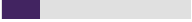
Tactical Ability

Vision	<div style="width: 60%;"></div>	3	Awareness	<div style="width: 60%;"></div>	3
Movement Off Ball	<div style="width: 60%;"></div>	4			

Athletic Ability

Pace	<div style="width: 60%;"></div>	3	Sharpness	<div style="width: 60%;"></div>	3
Mobility	<div style="width: 60%;"></div>	3	Body Strength	<div style="width: 60%;"></div>	3
Work Rate	<div style="width: 60%;"></div>	4			

Character

Effort to Win Ball		3	Bravery (Physical)		2
Bravery (Mental)		2	Energetic		4
Leadership		2	Talkative		3
Competitive		4	Team Player		5

MATCH CONTEXT

Competition: KickStart SS Avanced training

Opponent: Small sided games (SSG)6V6

Conditions: Wet,windy & uneven pitch

Context:

The current data in this profile is a snapshot from specific Small-Sided Games 6v6 (SSG) and technical training modules, including:

PASS & MOVE SQUARES: Focusing on spatial awareness and technical execution under movement.

RONDOS: Focusing on ball retention and processing speed in tight spaces.

6V6 POSSESSION GAMES (20x20 GRID): Focusing on immediate reaction to pressure and maintaining possession integrity.

Our scouting team will continue to monitor and observe the player in his natural team environment.

SCOUT'S ANALYSIS

Strengths

Demonstrates good ball control, combination play and body orientation in central areas.

Reacts positively in transition moments and contributes defensively after loss of possession.

Finds pockets of space between lines and provides support angles in attacking phases.

Areas for Improvement

Scanning & awareness, needs more frequent pre-receive scanning to improve awareness of surrounding pressure.

Decision making, can improve speed of play in possession, particularly under pressure.

Physical development, needs improvement in pace, sharpness and strength to compete more effectively in transition moments.

Development Recommendations

Scanning drills (pre- and post-reception awareness)

Decision-making exercises under pressure.

Repetition of half-turns and weak foot development.

Physical development, will support his effectiveness in higher intensity match situations (speed, agility, strength).

Additional Comments

Although Cameron did say his favorite position was left wing, in my observation I saw more of a center midfielder on the day.

Technically capable of playing center midfield with good ball control, combination play, and body positioning. Shows potential to develop into an effective attacking midfielder.

His Player of the Festival recognition at JFFC Applewood 2026 Player of the Festival reflects his potential. With improvements in awareness, decision-making, and physical attributes, he can develop into a more effective and decisive attacking player. Further

Observation in a left wing/central midfield match environment is recommended for a more complete positional assessment.